

Clarke® **POWER WASHER**



POWER WASHER
MODEL NO: DLS200AL

**OPERATION & MAINTENANCE
INSTRUCTIONS**

CE

DL0324 Rev 8

INTRODUCTION

Thank you for selecting this CLARKE Power Washer for your cleaning requirements.

This booklet contains important information about its operation and maintenance and should be read in conjunction with a similar guide produced by the manufacturers of the engine fitted to this particular unit.

Please read both of these carefully before using the machine.

FEATURES

These fully portable machines incorporate a variable pressure control, together with a fan or jet spray, and may be used with or without a detergent. Although these machines were designed to operate using a mains water supply, they will also work satisfactorily with a supply which is under positive pressure, i.e. from an elevated water tank etc.

When using the mains water supply, you must ensure you comply with all local bye laws.

GUARANTEE

This CLARKE product is guaranteed against faults in manufacture for twelve months from the date of purchase.

In case it is necessary to make a claim under this scheme, please retain your receipt or invoice to show when and where your purchase was made.

This guarantee will not be valid if the product is found to have been abused in anyway, or used otherwise than for its intended purpose.

Under the terms of this warranty, any repair or replacement can only be carried out by Clarke International Limited, or one of our authorised dealers.

Where possible any machine requiring attention should be returned to the dealer from whom it was purchased. Where this is not appropriate, please contact Clarke International, Service Department, Tel. 020 8988 7400.

This guarantee does not affect your statutory rights.

GENERAL SAFETY PRECAUTIONS

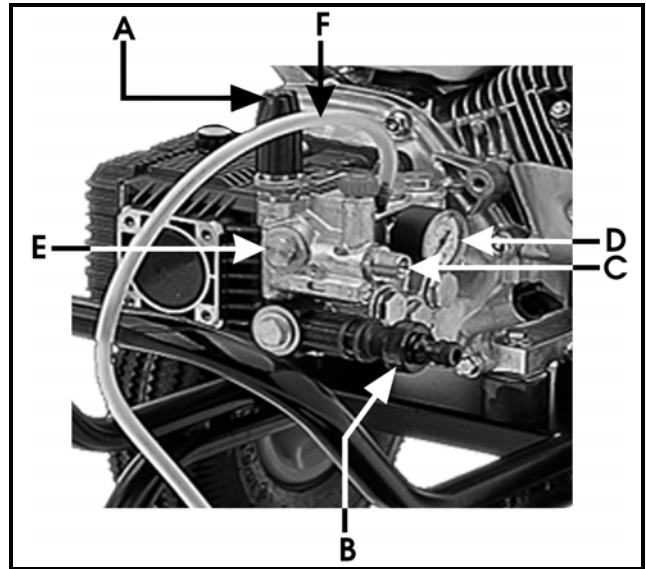


WARNING: WATER AT HIGH PRESSURE CAN BE DANGEROUS AND CAN CAUSE DAMAGE TO PERSONS OR PROPERTY IF THE OPERATOR IS CARELESS. NEVER ALLOW ANYONE TO OPERATE THIS EQUIPMENT UNLESS THEY ARE THOROUGHLY RELIABLE, AND FAMILIAR WITH THE SAFETY PRECAUTIONS.

- NEVER direct the spray towards any person or animal.
- NEVER direct the spray towards electrical wiring or equipment.
- NEVER hold your finger over the high pressure nozzle.
- NEVER allow children to use this machine.
- NEVER operate the machine with any of the covers removed.
- NEVER attempt any repairs to this machine unless you are properly qualified.
- NEVER supply any liquid other than water to the water inlet.
- NEVER use the chemical injection facility to introduce solvents, e.g. paint thinners, petrol, oil etc.
- When making a connection directly to the water mains supply you must ensure that it incorporates a device suitable to prevent liquids siphoning back from the power washer into the mains pipework.
- After the engine has been stopped and the water supply turned off, but before disconnecting any hose or accessory, ALWAYS release any residual pressure in the system by operating the trigger.
- ALWAYS keep the machine itself dry and well clear of water spray.
- When not in use, ALWAYS disconnect from the water supply and ensure the system is completely drained. Store in a cool dry location.
- When using the chemical injection facility, use only the chemical cleaning agents (detergents) that are approved for power washers. CLARKE Traffic Film Remover or CLARKE Wash and WAX (available from your dealer), is recommended.

ASSEMBLY AND PREPARATION FOR USE

- A - Pressure Regulator Knob
- B - Low Pressure Water Inlet
- C - High Pressure Water Outlet
- D - Pressure Gauge
- E - Unloader Valve
- F - Detergent Hose

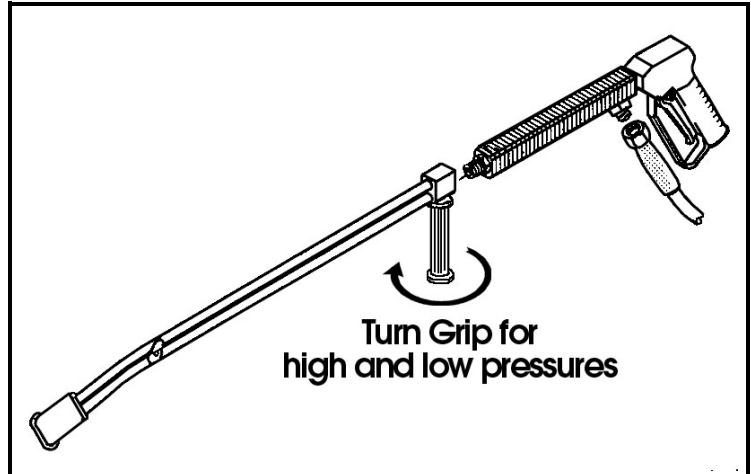


1. Attach the handle to the frame using the plastic screws supplied.
2. Assemble the lance by screwing the two halves together securely with the hand grip in any position convenient to the operator.
3. Two nipple sizes are supplied. The one with the larger bore is the low pressure nipple and should be screwed in to the tube nearest to the hand grip using a suitable socket. The smaller bore nipple is therefore screwed into the tube furthest from the hand grip.
4. Connect the high pressure hose to the upper connection (C) on the unloader valve.
 - Fit the dowty washer between the hose and upper connection (C).
5. Connect the other end of the hose to the connection at the lance, ensuring the seals are correctly in place.
6. The hose from the mains supply is connected to the lower connection (B).
 - A good quality hose of at least 1/2" should be used and is available from DIY, hardware and gardening supply stores. ALL connections must be tight to prevent leaks.
7. Check the pump oil level using the sight glass, but be aware that if the level is not visible, it may be as a result of over-filling and should be checked by removing the filler plug and checking. Top up where necessary with the recommended oil.
8. Refer to the handbook supplied for the engine, and check the engine oil level, topping up where necessary with the recommended oil.

OPERATION

1. Turn the water supply fully ON at the mains.
2. Refer to the engine handbook and start the engine. Move the speed lever to MAX.
3. To set the lance at high pressure, turn the hand grip of the lance clockwise (i.e. screwed 'IN'). Low pressure is set by screwing the grip 'OUT'.

NOTE: Low pressure setting is used for detergent spraying.



4. Check that there are no leaks in the line connections. Switch off the engine and make the necessary repairs before restarting the engine and pressing the trigger of the lance.
5. With the lance set at high pressure, (i.e. screwed 'in'), the pressure may be regulated by turning the adjuster knob on the unloader valve.
6. The low pressure setting is used for detergent pick-up (see below). ALWAYS ensure the filter is attached to the end of the pick-up tube and is completely submerged in the detergent. It is not necessary to adjust the pressure at the unloader valve when set to low pressure.

NOTE: If there is difficulty in starting the engine, particularly the diesel model, get an assistant to fully depress the lance trigger whilst you try to start. This will relieve any pressure in the pump making it easier to start.

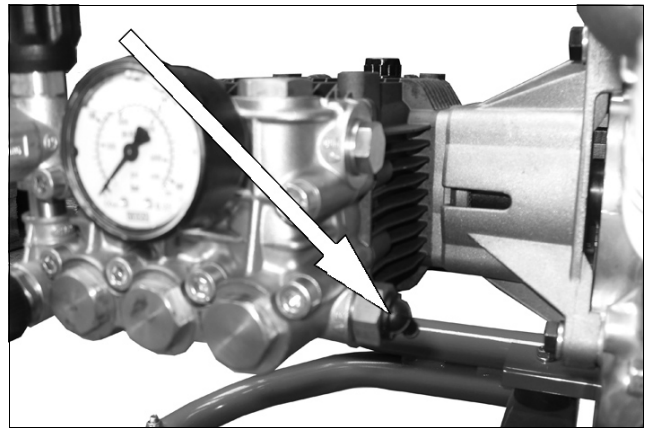
NOTE: Be aware that the pump delivers a considerable pressure. If the lance is set to high pressure and the trigger is depressed, you will experience a kick back. Ensure you are prepared for this, and hold the lance firmly. DO NOT let children to hold or operate the lance.

THERMAL RELIEF VALVE

NOTE: There may be a thermal relief valve and hose fitted to your pressure washer.

If the pump is run in bypass mode for a long time, the temperature of the water inside will increase, when this happens the thermal relief valve opens and will discharge some of the hot water.

This is to prevent damage to the pressure seal.



CAUTION: THE DISCHARGED WATER WILL BE HOT AND EXTRA CARE SHOULD BE TAKEN.

CHEMICAL CLEANING AGENTS

Chemical cleaning agents (detergents) may be injected into the low pressure spray. This is particularly useful for washing cars, greasy parts or oil spots.

To inject a detergent, insert the clear plastic hose with filter attachment into the detergent container, ensuring it is completely submerged.

NOTE: ONLY use detergents designed for use with power washers. We recommend the use of CLARKE Traffic Film Remover.

When detergent injection is required, screw the lance hand grip out (anticlockwise), to the low pressure setting, and the detergent will automatically be drawn into the water supply.

Spray the detergent on to the surface and allow it to work itself into the grime.

To rinse, set the lance to it's high pressure setting and blast off the off the dirt.

After cleaning, suspend the detergent hose in a container of clean water. Set the lance to low pressure and with the engine running and the mains water supply 'on', depress the trigger of the lance, and thoroughly flush out the system.

MAINTENANCE

If detergents have been used it is important to flush the system with clean water for a few minutes after use.

If there is a danger of freezing, anti freeze should be mixed with the flush water, or the system must be completely drained.

After the final flush, stop the engine; do not allow it to idle for longer than 15 seconds.

STORAGE

Store in an upright position, completely drained of water, in a dry location.

ENGINE

Refer to the engine handbook and service accordingly. NOTE: Engine oil should be checked regularly.

PUMP

Change the oil after the first 50 hours of service and every 500 hours thereafter. DO NOT attempt to carry out any mechanical repairs yourself. Please contact your CLARKE dealer for servicing and repairs.

SPECIFICATIONS

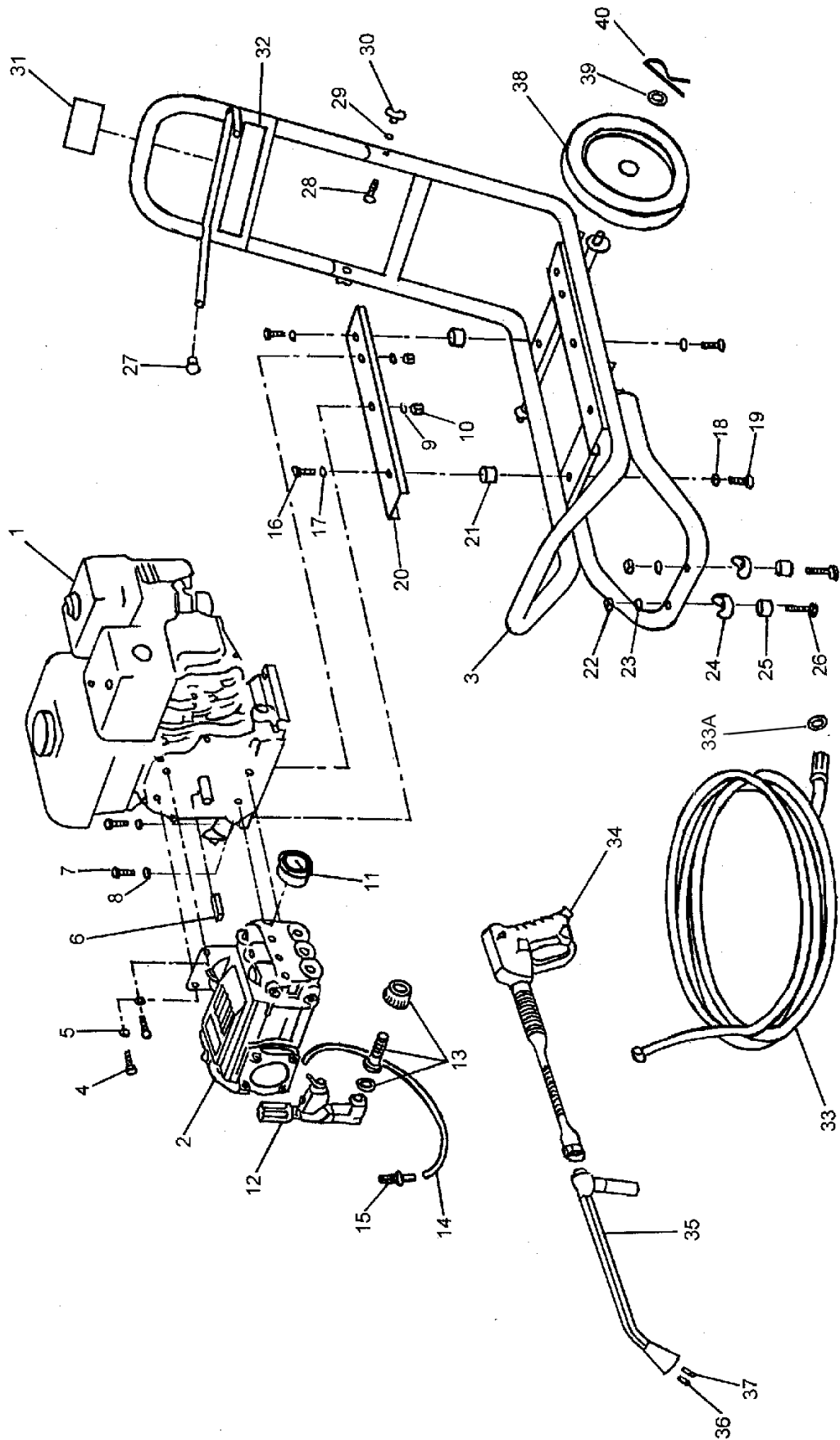
Part No	7330320
Engine Type	Kohler
Engine Rating	10 HP
Engine Speed	3400 RPM
Max. Pressure	200 Bar
Max. Water flow	15 lpm
Max. Water temperature	50°C
Pump Oil Type	SAE20W/40
Measured Sound Power	107 dB
Guaranteed Sound Power	109 dB
Vibration	< 2.5 m/s ²
Tyre Pressure	30 PSI

PARTS LIST

No	Description	Qty
1	Engine	1
2	Pump	1
3	Frame	1
4	Screw	4
5	Washer	4
6	Key	1
7	Screw	4
8	Washer M10	4
9	Washer M10	4
10	Nut M10	4
11	Pressure Gauge	1
12	Unloader	1
13	Hose Connection	1
14	Chemical Hose	1
15	Chemical Filter	1
16	Screw M8x12	4
17	Washer M8	4
18	Washer M8	4
19	Screw M8	4
20	Engine Bracket	2
21	Anti Vibration Mount	4

No.	Description	Qty
22	Nut M8	2
23	Washer M8	2
24	Saddle	2
25	Feet	2
26	Screw	2
27	Plastic Insert	2
28	Screw	2
29	Washer	2
30	Knob	2
31	Label (Specification)	1
32	Label (Powerwash)	1
33	Hose	1
33A	Dowty Washer	1
34	Lance Handle Assembly	1
35	Twin Lance	1
36	Nozzle HP	1
37	Nozzle LP	1
38	Wheel 260x20	2
39	Washer	2
40	Split Pin	2

PARTS DIAGRAM



DECLARATION OF CONFORMITY



Clarke[®]
INTERNATIONAL

Hemnall Street, Epping, Essex CM16 4LG

DECLARATION OF CONFORMITY

This is an important document and should be retained.

Product Description: Petrol / Diesel Powered Washer
Model number(s): PLS200AH, PLS160AH, PLS160YB, PLS130AH, DLS200AL
Date of Issue: 12/08/2014
Technical Documentation Holder: A.R. Pond
Clarke International
2a Shrubland Road
London E10,7RB
UK

We hereby declare that this product(s) complies with the following directive(s):

2000/14/EC Noise Emissions Directive (amended by 2005/88/EC).

The technical documentation required to demonstrate that the product(s) meet(s) the requirement(s) of the aforementioned directive(s) has been compiled and is available for inspection by the relevant enforcement authorities.

Signed:

J.A. Clarke
Director

(Noise Conformity)

Notified Body: N/A

Product Code	Serial / batch Number:	CE mark was first applied	Conformity Assessment Procedure:	Noise Related Value: l/h	Measured Sound Power Level: dB(A)	Guaranteed Sound Power Level: dB(A)
PLS200AH	7330300	2007	2000/14/EC Annex V	900	101	104
PLS160AH	7330280	2006	2000/14/EC Annex V	66	100	103
PLS160YB	7330282	2006	2000/14/EC Annex V	66	100	103
PLS130AH	7330260	2006	2000/14/EC Annex V	66	100	102
DLS200AL	7330320	2006	2000/14/EC Annex V	900	107	109

NOTES

A SELECTION FROM THE VAST RANGE OF

Clarke®

QUALITY PRODUCTS



AIR COMPRESSORS
From DIY to industrial, Plus air tools, spray guns and accessories.

GENERATORS
Prime duty or emergency standby for business, home and leisure.

POWER WASHERS
Hot and cold, electric and engine driven - we have what you need

WELDERS
Mig, Arc, Tig and Spot. From DIY to auto/industrial.

METALWORKING
Drills, grinders and saws for DIY and professional use.

WOODWORKING
Saws, sanders, lathes, mortisers and dust extraction.

HYDRAULICS
Cranes, body repair kits, transmission jacks for all types of workshop use.

WATER PUMPS
Submersible, electric and engine driven for DIY, agriculture and industry.

POWERTOOLS
Angle grinders, cordless drill sets, saws and sanders.

STARTERS/CHARGERS
All sizes for car and commercial use.



PARTS & SERVICE: 0208 988 7400

Parts Enquiries
Parts@clarkeinternational.com

Servicing & Technical Enquiries
Service@clarkeinternational.com

SALES: UK 01992 565333 or Export 00 44 (0)1992 565335

Clarke® INTERNATIONAL Hemnall Street, Epping, Essex CM16 4LG
www.clarkeinternational.com